

Smart Meter SEM-3000

Software User Manual  
(PC Version)



코린스계기주식회사

E-store

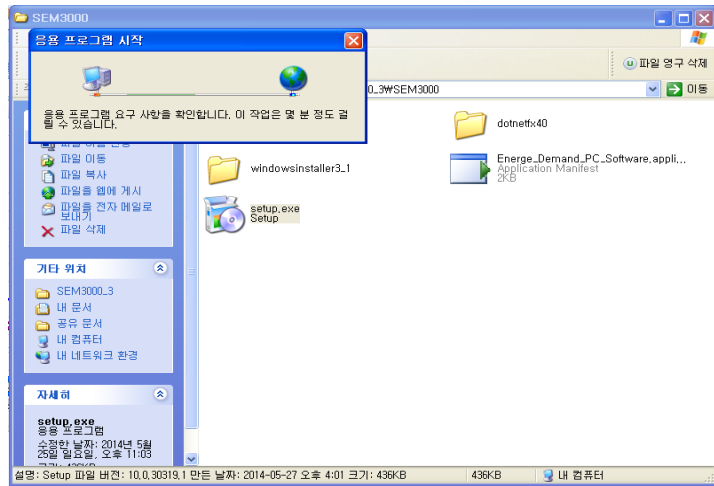
[www.korins.kr](http://www.korins.kr)

Tel

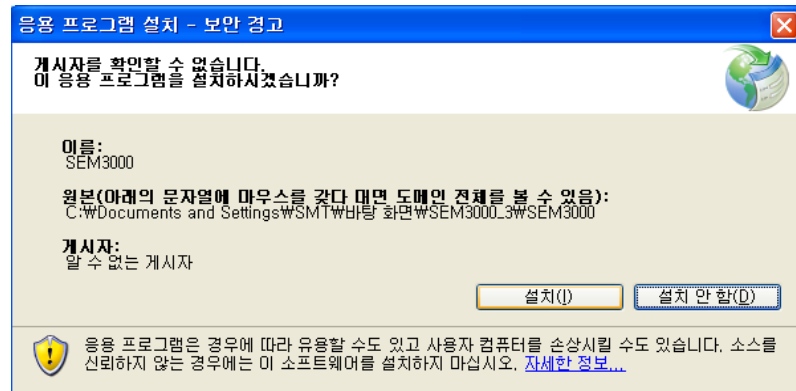
82-10-8905-1244

## Software Installation

1. Unzip the supplied programs, click Setup.exe to run the installation.

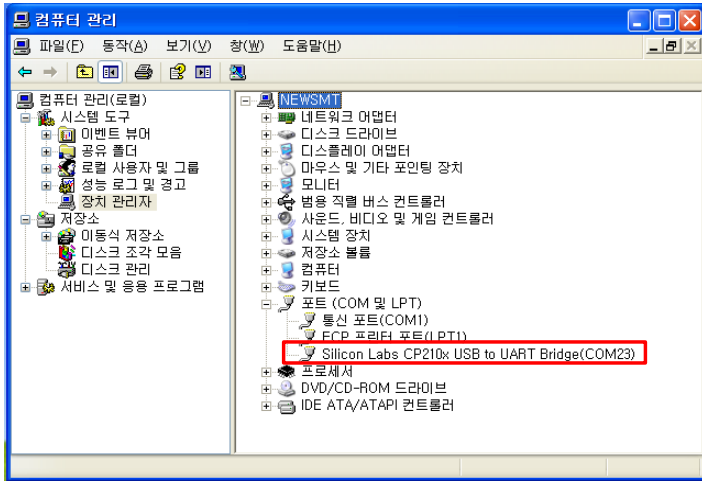



2. When run the Setup.exe, The following window will appear. Press the Install, Installation will start. software will run automatically after Installation completion.

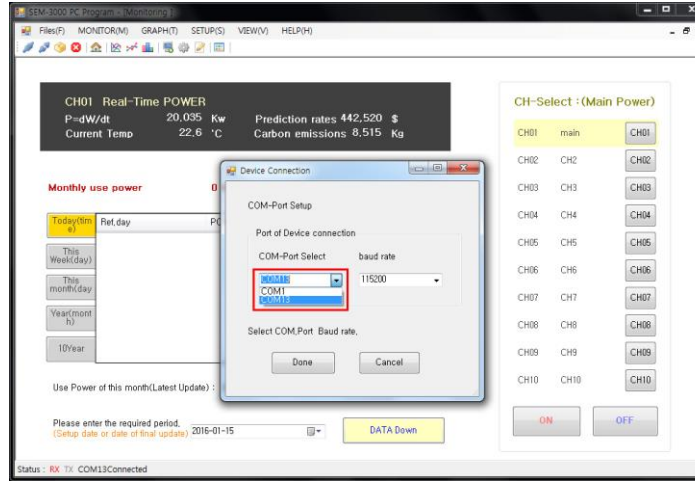


## How to connect Software

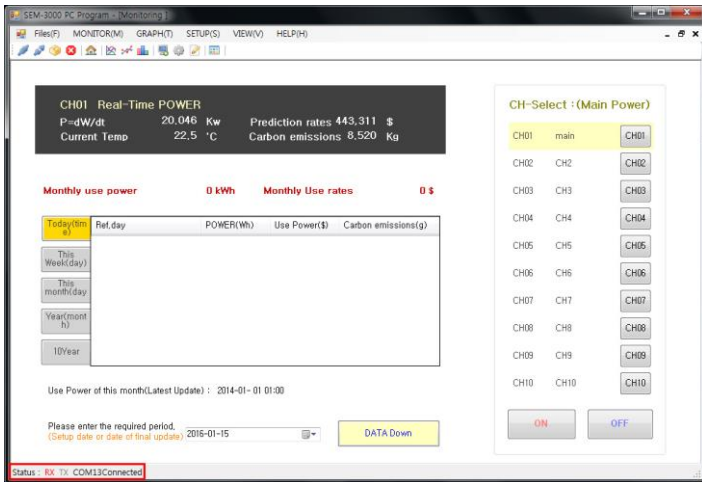
1. If connect the SEM3000 data cable to the PC, it is recognized as in the Device Manager as "Silicon Labs CP210x USB to UART Bridge(COM\*\*)".



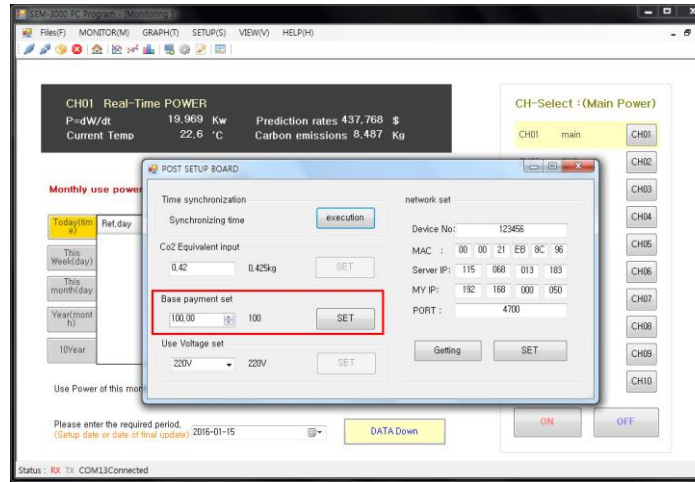
2. If click the Settings menu and  icon, a window opens as shown below. This process must be set before connecting.



3. When you click OK, "Status RX TX COMOO been connected" is displayed as shown below, and you can check this real-time information.



4. After setting the standard-rates in the "POST settings", you can view the data through the Real-time monitoring, periodic graph, channel comparison graph.



## Download Data

1. Specify the time to download the data. (The first installation date)

CH01 Real-Time POWER  
 P-d/W/d/t 19.956 Kw Prediction rates 436.831 \$  
 Current Temp 22.7 °C Carbon emissions 8.481 Kg

CH-Select : (Main Power)  
 CH01 main CH01  
 CH02 CH2 CH02  
 CH03 CH3 CH03  
 CH04 CH4 CH04  
 CH05 CH5 CH05  
 CH06 CH6 CH06  
 CH07 CH7 CH07  
 CH08 CH8 CH08  
 CH09 CH9 CH09  
 CH10 CH10 CH10

Monthly use power 0 kWh Monthly Use rates 0 \$

Today(tn)	Ref.day	POWER(Wh)	Use Power(\$)	Carbon emissions(g)
2016-01-15 09:00		0		

Use Power of this Month(Latest)  
 10 11 12 13 14 15 16  
 17 18 19 20 21 22 23  
 24 25 26 27 28 29 30  
 31 1 2 3 4 5 6

Please enter the required period.  
 (Setup date or date of final update) 2016-01-15

DATA Down

Status : RX TX COM13Connected

2. Click the data download button, data download will begin as follows.

CH01 Real-Time POWER  
 P-d/W/d/t 0 Kw Prediction rates \$  
 Current Temp 22.8 °C Carbon emissions .000 Kg

CH-Select : (Main Power)  
 CH01 main CH01  
 CH02 CH2 CH02  
 CH03 CH3 CH03  
 CH04 CH4 CH04  
 CH05 CH5 CH05  
 CH06 CH6 CH06  
 CH07 CH7 CH07  
 CH08 CH8 CH08  
 CH09 CH9 CH09  
 CH10 CH10 CH10

Monthly use power 0 kWh Monthly Use rates 0 \$

Today(tn)	Ref.day	POWER(Wh)	Use Power(\$)	Carbon emissions(g)
2016-01-15 00:00		0		
2016-01-15 01:00		0		
2016-01-15 02:00		0		
2016-01-15 03:00		0		
2016-01-15 04:00		0		
2016-01-15 05:00		0		
2016-01-15 06:00		0		
2016-01-15 07:00		0		

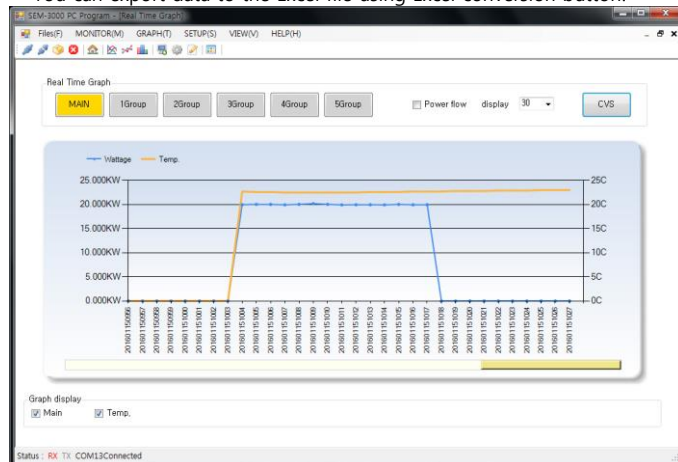
Of bringing the data ...  
 Jams a lot of time depending on the data amount, Please Wait.

Please enter the required period.  
 (Setup date or date of final update) 2016-01-15








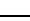




DATA Down

Status : RX TX COM13Connected

3. Once the download is complete, real-time data, channel-specific graphs, comparative graphs and data validation is possible, You can export data to the Excel file using Excel conversion button.



**Software Icons Description**

	Connect: SEM3000 software connection
	Disconnect: SEM3000 software disconnection
	Connection Wizard: SEM3000 Auto Connection Wizard
	Exit: Exit the software
	Monitoring: Real-time data monitoring and each channel ON/OFF control function
	Real Time: Check main power & each group power (Data can be extracted into an Excel file.) (If does not a real time graph download, change to the real-time graph on the graph for each channel.)
	CH. graph: Can specify the channels you want to display in each group. In a selected group Time, Day, Week, Month, Year for each graph display.
	Comparison: Current data and monthly data comparative are available.
	Port Define: Set the communication port
	SEM. POST: Computer and equipment time synchronization, Co2 emissions, Reference rates. Operating voltage, Network settings (cloud service) is available.
	CH. Alias: Each channel name, can set the group.
	Inform: Shown the software version, Company name.



**코린스계기주식회사**